



# What's Eating Your Collection?

---

## Australian spider beetle *Ptinus tectus*

Adult

Size: 3-4mm

Shape: round thorax, round body. Spider-like.

Colour: Dark brown

Antennae: Long, no club

Distinguishing features: Wing cases with lines and hairs, spider-like.

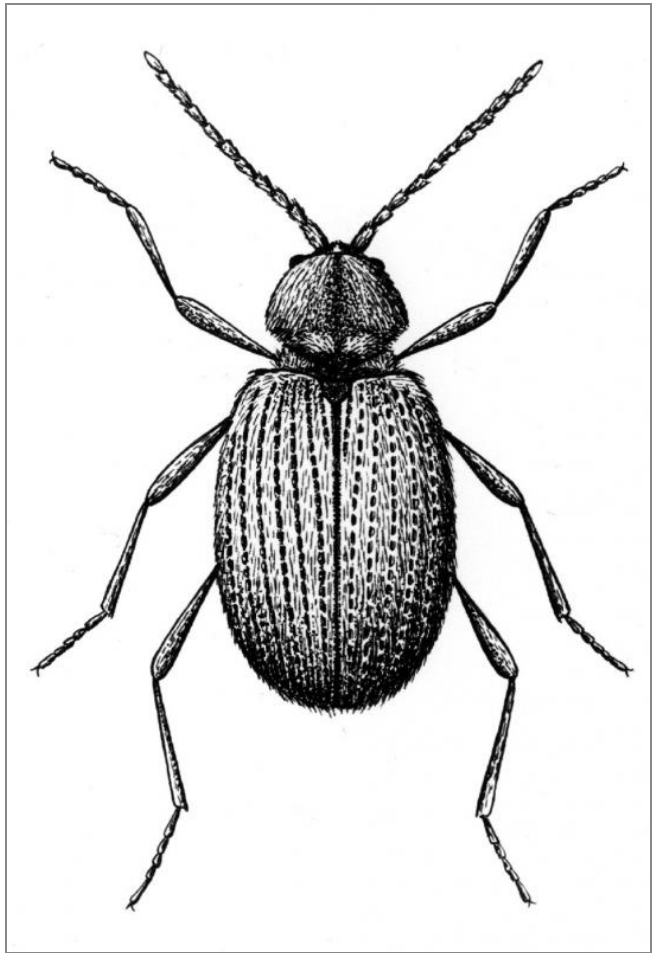
Larvae are scavengers of: dried food, dried plants.

Damage: Round exit holes, tunnels in food, frass.

Adults eat: Very little but do drink water and are long lived

Often found on: bird's nests, dead animals and insects

Note: the larvae excavate cavities when they pupate, which they do in a silk cocoon. They may damage books, paper and wood.



## Related Objects



Australian spider beetle  
larva *Ptinus tectus*



Globular spider beetle  
*Trigonogenius globulus*



Golden spider beetle  
*Niptus hololeucus*



Herbarium specimen  
damaged by spider  
beetle



Spider beetle damage to  
shelf



White marked spider  
beetle *Ptinus fur*