



What's Eating Your Collection?

Biscuit beetle *Stegobium paniceum*

Adult beetle, also known as the drugstore beetle or bread beetle

Size: 2-4mm

Shape: Oval

Colour: reddish brown

Antennae: medium length, last three segments triangular

Distinguishing features: head not visible from above, wing cases have grooves and are covered in short hairs

Larvae are pests of: materials with a high starch content, such as biscuits, dried plant material, papier mache, books and pet food. They do not eat wood (unlike Furniture beetle).

Damage is: small round exit holes and copious frass.

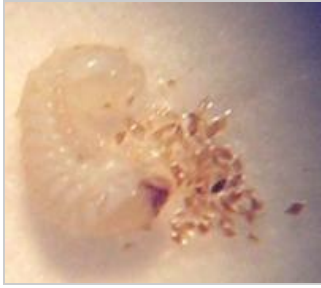
Adults eat: very little but will bite their way out of food through many materials including aluminium foil, cardboard and leather.

Other info: adults fly when it is warm and are attracted to lights. Not found outside in the UK.

May be confused with Furniture beetle.



Related Objects



Biscuit beetle larva
Stegobium paniceum



Cigarette beetle
Lasioderma serricorne



Herbarium specimen
damaged by biscuit
beetle



Woodworm / Furniture
beetle *Anobium*
punctatum