



# What's Eating Your Collection?

---

## Common booklouse *Liposcelis*

Adult booklouse or psocid

Size: Less than 1mm

Shape: Rounded oval

Colour: Adults are pale brown, nymphs are white

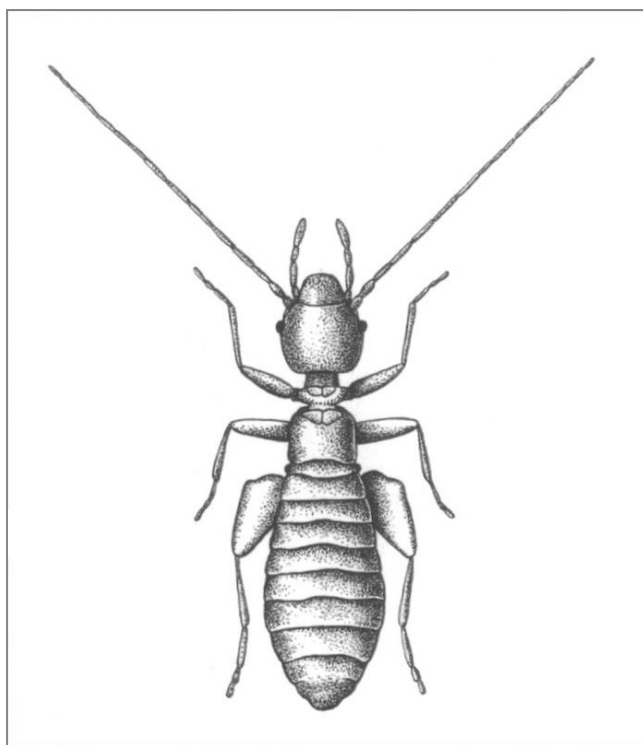
Antennae: Extremely long and thin

Distinguishing features: There are hundreds of species of booklice, *Liposcelis* has a large head, translucent legs and no wings.

Damage: Adults and nymphs will eat damp paper and books.

Often found on: Paper and books in warm, damp conditions.

Individual booklice do little damage, but in large numbers damage can be extensive.





### Related Objects



Black booklouse  
Lepinotus



Winged Booklouse