



What's Eating Your Collection?

Biscuit beetle larva *Stegobium paniceum*

Larva removed from food. These are rarely seen as they live in tunnels. They are very difficult to distinguish from Furniture beetle larvae.

Size: 1mm when first hatched to 4mm when fully grown

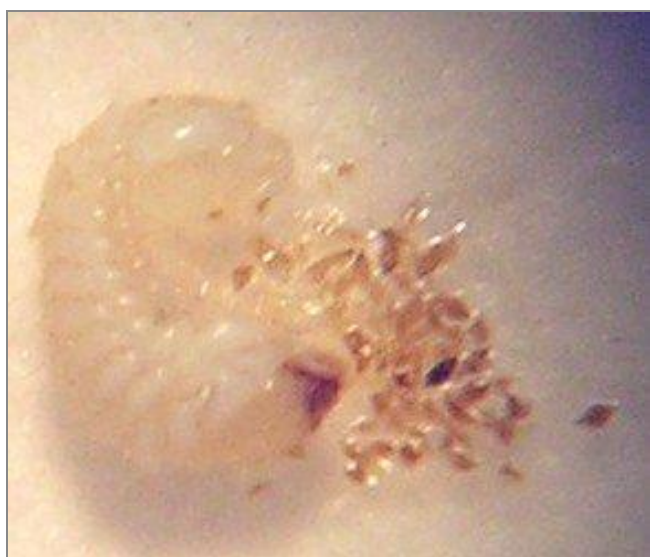
Shape: C shaped

Colour: White with dark head

Antennae: Not visible

Distinguishing features: C shaped

Larvae are pests of: materials with a high starch content, such as biscuits, dried plant material, papier mache, books and pet food. They do not eat wood.



Related Objects



Biscuit beetle
Stegobium paniceum