



# What's Eating Your Collection?

---

## The Pale backed clothes moth *Monopis crocicapitella*

Adult

**Note:** The first specimens of these moths found on traps were thought to be *Monopis obviella* and it was given the common name of the Obvious moth at Pest Odyssey 2011. However, since then, all the specimens which have been identified to species have been the pale-backed clothes moth *Monopis crocicapitella*. The adults are attracted to the pheromone used in the webbing clothes moth traps, sometimes in large numbers. The larvae live in cases similar to those made by the case-bearing clothes moth, but very little is known about either species with regard to their pest status. They seem to require moisture to survive and may only be able to damage textiles when they are damp.

Size: about 10mm

Shape: small moth, wings folded along back

Colour: Very dark brown and cream

Antennae: long

Distinguishing features: Dark moth with a pale stripe along back.

Larvae have cases similar to case-bearing clothes moth, *Tinea pellionella*, and have been found living in birds nests and bat guano.

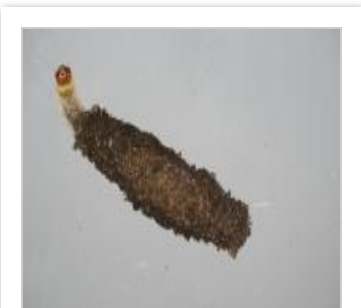
Damage: Not yet known

Adults eat: Nothing

Often found on: webbing clothes moth pheromone traps. This moth has been found in the last few years (from 2013) in museums and historic houses. It is not yet known if it will become a pest.



## Related Objects



Larva Pale backed  
clothes moth *Monopis  
crocipitella*