



# What's Eating Your Collection?

---

## Case-bearing clothes moth larva *Tinea pellionella*

Half grown larva in silk case

Size: 2-10mm (case)

Shape: Flattened silk cylinder, slightly wider at each end, with larva inside.

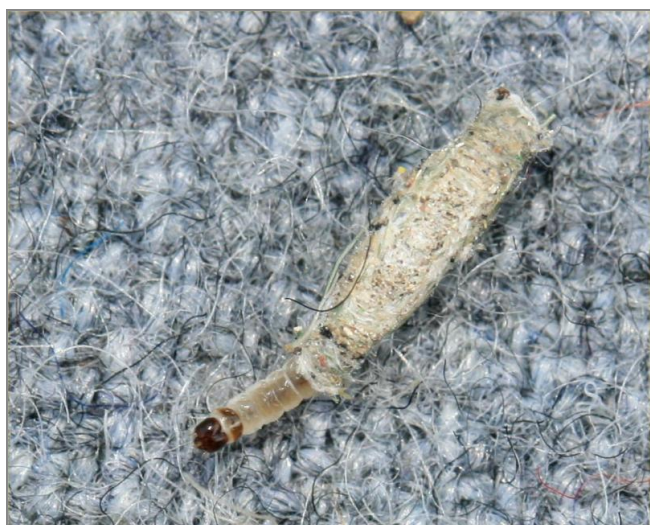
Colour: Larva is white with dark brown head. Cases white silk, often with fragments of material being eaten. See related objects.

Antennae: None

Distinguishing features: Larva usually inside case - the larva carries the case with it.

Larvae are pests of: Wool, skin, fur, feathers and occasionally dirty silk.

Note: Their natural home is birds' nests.



## Related Objects



Case bearing clothes  
moth larvae and cases



Case-bearing clothes  
moth cases on feathers



Case-bearing clothes  
moth cases on trap



Case-bearing clothes  
moth cases *Tinea  
pellionella*



Case-bearing clothes  
moth *Tinea pellionella*



Case-bearing clothes  
moth *Tinea pellionella*  
larva in case